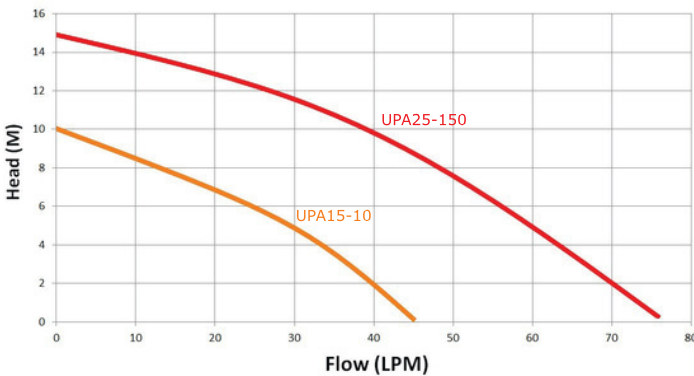
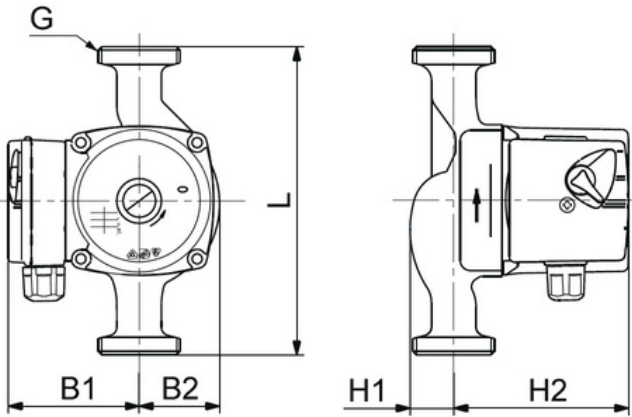


Trevoli UPA Series				
Part No.	kW	Inlet/Outlet	Phase	Voltage
UPA 15-10	0.1	20mm 15mm Unions	1	220-240
UPA 25-150	0.3	25mm 20mm Unions	1	220-240



**DESCRIPTION**

The Trevoli UPA Booster series are a stainless steel circulator pump with integrated flow sensor, designed for water pressure boosting in domestic properties to provide additional pressure to hot and cold water taps and similar outlet points. These extremely quiet pumps have particular application in homes equipped with gravity fed or low pressure hot water systems.

**FEATURES**

- Maintenance free
- Low noise
- Low energy consumption
- Corrosion-resistant stainless steel pump housing
- UPA-25-150 comes with two Brass Unions (25mm/20mm)
- UPA-15-10 comes with two Brass unions (20mm/15mm) and a 15mm NRV

**TECHNICAL FEATURES**

- Enclosure class: IP42
- Insulation class: F
- Duty rating: Continuous
- Liquid temperature range: 0-70° C
- Maximum ambient temperature: 40° C
- Maximum operating pressure: 10 bar



Dimensions							
MODEL	L	H1	H2	B1	B2	G	WEIGHT
UPA 15-10	160mm	20mm	125mm	50mm	50mm	20mm	3.2kg
UPA 25-150	185mm	28mm	145mm	90mm	66mm	25mm	5.1kg